

**tover**<sup>®</sup>  
purposeful play



# The Tovertafel

Improving quality of life & quality of care for seniors living with dementia

[tover.care/us](https://tover.care/us)



● Exclusive distributor of the Tovertafel<sup>®</sup>

**eugeria**<sup>™</sup>  
YOUR PARTNER FOR INNOVATION



“

*“Families are blown away by what this technology can do. The Tovertafel unlocks the imagination of our residents. And for a few precious moments, it helps our residents, our families and caregivers rediscover who these extraordinary individuals truly are.”*

**Pam Tokarczuk**, Alzheimer's and Dementia  
Program Director, Van Dyk Healthcare, NJ

A photograph of two elderly women with white hair sitting at a wooden table. The woman on the left is wearing a grey sweater and has her eyes closed in a joyful expression. The woman on the right is wearing a red shirt under a grey patterned cardigan and glasses, laughing heartily with her mouth open. On the table in front of them are several colorful geometric shapes, including triangles and a large arc, which appear to be part of an interactive activity.

**tover**<sup>®</sup>

Tover Health Tech Inc. • [www.tover.care/us](http://www.tover.care/us) • [info.usa@tover.care](mailto:info.usa@tover.care)



# The Power of Purposeful Play

The Tovertafel is an award-winning care innovation that has become an indispensable tool in more than 6000 dementia care communities worldwide. Developed in the Netherlands, the Tovertafel (Dutch for “Magic Table”) is the first serious games system of its kind. Care community residents, staff, and relatives alike are able to experience its benefits first-hand.

## Playing for a better existence

Scientific research suggests that The Tovertafel’s unique games have a positive impact on the quality of life of seniors living with dementia. Through interactive light projections, the games stimulate physical activity, social interaction and cognition. Resulting in real, measurable effects on the wellbeing of residents, as well as care staff.\*

## Everyday support and care


The Tovertafel can support care professionals in providing the highest quality of care on a daily basis. It can be integrated seamlessly into daily routines and broadens the range of easy yet effective activities that staff or volunteers can offer their residents.

Challenging situations, such as restlessness, or taking medication, are made more manageable by playing with the Tovertafel. By facilitating social interaction and reducing restless and tense behavior, the Tovertafel helps strengthen carer-resident relationships and lightens workloads. Ultimately reducing employee turnover, increasing occupancy rates and raising the quality of care they provide. The Tovertafel makes person-centered care that much more achievable and enjoyable.

## Commitment to wellbeing

As well as providing invaluable moments of personal connection and joy, the Tovertafel improves a care community’s offering. The cutting-edge technology demonstrates a community’s dedication to resident wellbeing and its commitment to innovation. Proving to families that care communities genuinely care about promoting happiness and engagement in caregiving.

\*For more about Tover’s commitment to research and the effects of the Tovertafel, please visit [www.tover.care/us/claims](http://www.tover.care/us/claims)



*“The device is not listed as clinical, but the benefit of it is very clinical, because we can see a definite improvement in a resident’s demeanor, affect, or mood when they’re playing it and after they’ve finished playing it. It’s like a magic pill.”*

Kim Salvio, Personal Care Administrator,  
Providence Point, PA

”

“

*“The reason why I’m so happy with the Tovertafel is because it addresses a need we have with our high acuity lower functioning residents. Social and Emotional Engagement & Wellness is extremely difficult to curate for residents with Dementia and or Cognitive impairment.”*

Chris Corrigall, Vice President  
Life Enrichment, Aegis Living,  
Seattle, WA



## This is How the Tovertafel Works

The Tovertafel can be mounted onto the ceiling above a table or flat surface using a simple click-and-ready system. This makes it easy to install the Tovertafel in familiar surroundings, which is especially important for seniors living with dementia as it prevents overstimulation and unnecessary agitation. The Tovertafel projects vibrant, lifelike images onto the surface in the form of games that react to even the smallest of hand and arm movements. Creating a “magic-like” effect that enchants residents and caregivers alike.

### More than 30 games to choose from

The Tovertafel and its games are developed in co-design together with care professionals, experts, relatives and the players themselves. Meaning they’re tailored exactly to suit their individual needs. The games also employ a no-fail, layered design which means that participants can play according to their ability. This instills confidence and makes the games easy to enjoy at any level. They come in a variety of formats, each promoting physical movement, social interaction and cognitive stimulation. Such as raking leaves, polishing silverware or playing a game of rummy.



Would you like to know more about the Tovertafel and its games? Visit:

[www.tover.care/us](http://www.tover.care/us)



# Tover's Offer

There are various options for purchasing a Tovertafel. The Tover team can help with finding one that ensures the purchase of a Tovertafel is as affordable as possible. The Tovertafel's Open Play & Learn subscription gives customers access to the full range of games and features, which are regularly updated with new additions throughout the year. It also gives them access to "My Tover," Tover's online portal, where they'll find resources, game guides, and instructional videos that will make it even easier to get the most out of their Tovertafel.

## Crowdfunding

Tover wants as many caregivers worldwide to be able to give people with dementia the gift of a better quality of life. That's why they've created a convenient crowdfunding starter pack, so caregivers can crowdfund their very own Tovertafel. For more information about crowdfunding, get in touch using the contact details below.

## Demo

Interested in seeing the Tovertafel in action? Contact Tover for a free, non-binding demo and experience the Tovertafel for yourself.

*"So far, staff has been acclimating themselves to the device and games and they are simply amazed by the Tovertafel. In fact, during one of many sessions we had with small groups of staff members, I observed a heightened level of relaxation and delight."*

**Heather Wood Gramza**, Director, Howard  
Miller Public Library, Zeeland, MI

”





*“There’s nothing more valuable than creating moments of happiness in the care sector. That’s what motivates me.”*

Hester Le Riche, CEO and founder of Tover

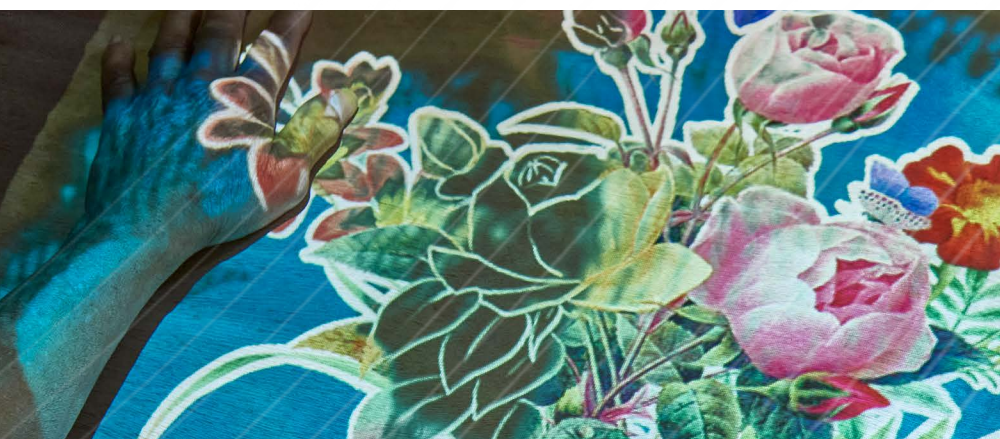
Hester Anderiesen Le Riche - PhD

## Tover Cares

Founded in 2015 by Hester Le Riche, Tover is committed to creating a more caring and inclusive world for people with cognitive challenges. This started with the Tovertafel, which emerged as a result of Le Riche's PhD research. It's the only serious games system that is supported by scientific research and improves quality of life, care and staff happiness. Today, the Tovertafel has become a household name in more than 16 countries worldwide.

### Supported by research

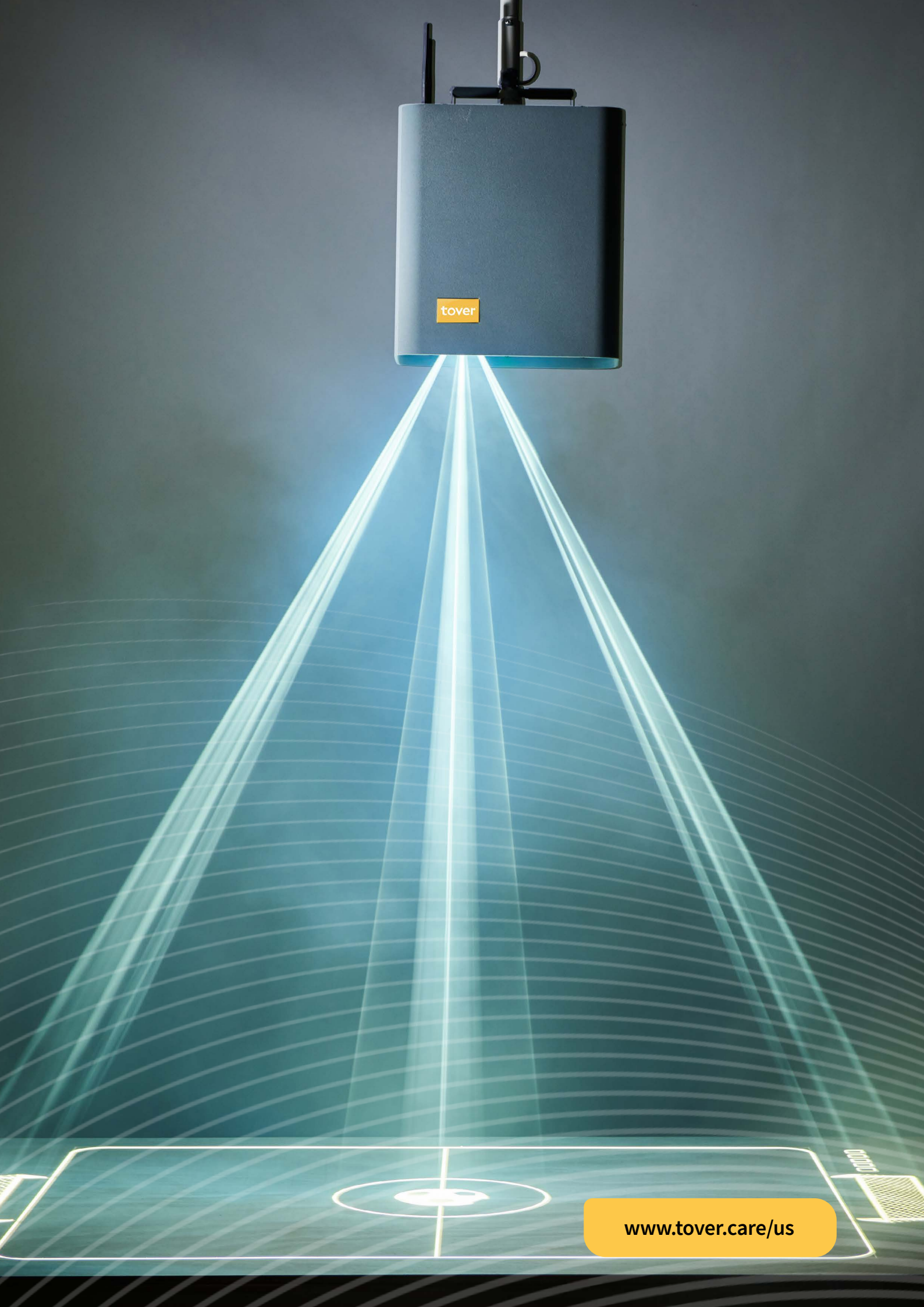
Tover is the only serious game provider which is supported by scientific studies. That's why research plays a central role in the development and evaluation of products such as the Tovertafel. Tover works closely with end-users, healthcare professionals, family members, and other experts to develop its products in a process called co-design. They also value scientific research to ensure that what they create has beneficial effects, working closely with independent research partners to do so. That's how they guarantee that their products cater to practices and solve current challenges in the care sector.



For more information about Tover's research and to explore their studies, visit

[www.tover.care/us/research](http://www.tover.care/us/research)





tover

[www.tover.care/us](http://www.tover.care/us)

## Discover the Tovertafel

Get to know the world's only serious games system for people living with dementia

*The benefits of playing with the Tovertafel*



Reduce restless &  
tense behavior



Increase physical  
activity



Break through  
apathy



Promote social  
interaction between  
carers & residents



Increase staff work  
pleasure



Further improve  
relationships between  
carers & residents

*Happy Residents.  
Happy Staff.  
Happy Families.*

*“Most promising  
innovation of 2022”*

- CES and USA Today



• Exclusive distributor of the Tovertafel<sup>®</sup>

**eugeria**<sup>MO</sup>  
YOUR PARTNER FOR INNOVATION

**Eugeria**