

**tover**<sup>®</sup>  
purposeful play



# The Tovertafel

Improving quality of life & quality of care for elderly people living with dementia

[tover.care](https://tover.care)





“

*“The residents are fascinated with the movement and the light, and the Tovertafel really calms people down who otherwise would get agitated”*

Kate Cooper, Activities Coordinator,  
Littlebourne House, UK





# The Power of Purposeful Play

The Tovertafel is an award-winning care innovation that has become an indispensable tool in more than 10.000 dementia care communities worldwide. Developed in the Netherlands, the Tovertafel (Dutch for “Magic Table”) is the first serious games system of its kind. Care community residents, staff, and relatives alike are able to experience its benefits first-hand.

## Playing for a better existence

Scientific research proves that The Tovertafel’s unique games have a positive impact on the quality of life of seniors living with dementia. Through interactive light projections, the games stimulate physical activity, social interaction and cognition. Resulting in real, measurable effects on the wellbeing of residents, as well as care staff.\*

## Everyday support and care


The Tovertafel can support care professionals in providing the highest quality of care on a daily basis. It can be integrated seamlessly into daily routines and broadens the range of easy, yet effective activities. Challenging situations, such as restlessness, agitation or apathy, are prevented or tackled by playing with the Tovertafel.

By facilitating social interaction and reducing restless and tense behavior, the Tovertafel helps strengthen carer-resident relationships and lightens workloads. Ultimately reducing employee turnover, increasing occupancy rates and raising the quality of care they provide. The Tovertafel makes person-centered care that much more achievable and enjoyable.

## Commitment to wellbeing

As well as providing invaluable moments of personal connection and joy, the Tovertafel improves a care community’s offering. The cutting-edge technology demonstrates a community’s dedication to resident wellbeing and its commitment to innovation. Proving to families that care communities genuinely care about promoting happiness and engagement in caregiving.

*\*For more about Tover’s commitment to research and the effects of the Tovertafel, please visit [www.tover.care/research](http://www.tover.care/research)*



*“The Tovertafel brings more joy, is a meaningful distraction technique and makes for overall less agitation. Our staff finds the Tovertafel easy to use, helpful, engaging and they use it quite often throughout their shift.”*

Stephanie Rodgers, Recreation Therapist,  
St. Teresa Place, Covenant Care,  
Canada

“

*“Every resident responded to the Tovertafel, whether they were actively participating or engaged as spectators. For many residents this is a giant leap forward. This is something we cannot achieve with the care we normally provide.”*

Ute Weiler, Geriatrics Nurse, University Medical Centre Mannheim, Germany



## This is how the Tovertafel Works

### What is the Tovertafel?

The award-winning Tovertafel projects engaging light games onto surfaces, designed to stimulate on a social, physical, sensory, and cognitive level. Over the past decade, it has become an industry standard, enhancing the quality of life in more than 10,000 Memory Care, ID Care, and Inclusive Education communities across 16 countries worldwide.

The Tovertafel can be mounted onto the ceiling above a table or flat surface using a simple click-and-attach system. This makes it easy to install the Tovertafel in familiar surroundings, which is especially important for elderly people living with dementia as it prevents overstimulation and unnecessary agitation.

### More than 40 games

The Tovertafel and its games are developed in co-design together with care professionals, experts, relatives and the players themselves. Meaning they're tailored exactly to suit their individual needs. The games also employ a no-fail, layered design which means that participants can play according to their ability. This instills confidence and makes the games easy to enjoy at any level. They come in a variety of formats, each promoting physical movement, social interaction and cognitive stimulation. Such as raking leaves, polishing silverware or playing a game of rummy.

Recently a new feature has been introduced, called Tover Lab. This feature allows you to customize some of the games with your own imagery and enables you to provide the best personalised play experience!



Would you like to know more about the Tovertafel and its games? Visit:

[www.tover.care/games](http://www.tover.care/games)



“

*“There’s nothing more valuable than creating moments of happiness in the care sector. That’s what motivates me.”*

Hester Le Riche,  
CEO and founder of Tover

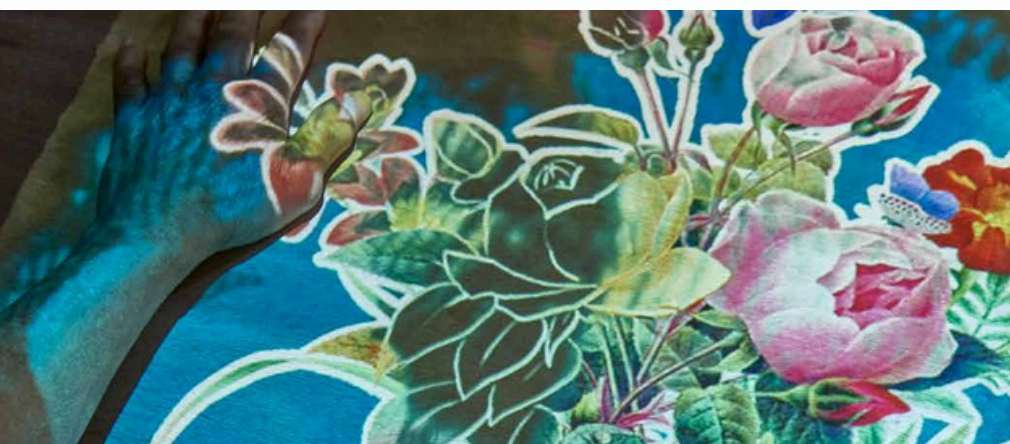


Hester Anderiesen Le Riche - PhD

## Backed by research

Tover specializes in developing interactive solutions that have a positive impact on the quality of life of people living with dementia. It is important to us that everything we create has positive effects, such as improving social interaction, promoting physical and cognitive activity and more benefits related to quality of life. That is why research continues to play a central role in developing and improving our products and services. This stems from our beginnings in 2015, when our CEO and founder Hester Le Riche developed the first Tovertafel as part of her PhD project.

To ensure our solutions have the intended effects, we work closely with end-users, healthcare professionals, family members, and other experts to understand the needs of our target groups. We also conduct research studies and collaborate with independent research partners to gain insight into the benefits of playing with our products, and their effects on behavior and emotions. This not only allows us to improve our portfolio, but also helps us to identify new target groups and increase the impact of everything we do on people living with dementia.



For more information about  
Tover's research and to explore  
their studies, visit:

[www.tover.care/research](http://www.tover.care/research)



# Tovertafel *Pixie*



## Person-centred, flexible & mobile

Improving the quality of life of people with dementia is now possible everywhere. The Tovertafel Pixie allows you to project interactive games and stimulating or relaxing images wherever you want, and seamlessly fits into assisted daily living activities.

### Person-centred

Stimulate a more intimate atmosphere, where you can truly connect and build trust with the people you take care of. Tovertafel Pixie's projector has been designed specifically for sessions between one resident or a small group and a care professional or family member. This makes it easier to focus attention and provide an appropriate and captivating activity.

### Flexible

The interactive games and soothing images of the Tovertafel Pixie can be projected on multiple surfaces, automatically adjusting to each situation. Effortlessly, create a meaningful recreational activity that stimulates residents, have fun playing a game on the table during a family visit, or generate a peaceful moment before going to sleep with pleasing images on the wall or ceiling.

### Mobile

Provide the best care to residents where it is needed! For example, the Tovertafel Pixie can be used in a resident's bedroom to calm them down. Or simply in the living room to play a fun game in a small group. Thanks to its wheels, the Tovertafel Pixie is easy to move to move around, so multiple groups can enjoy and benefit from it!





# Purchasing a Tovertafel

There are various options for purchasing a Tovertafel. Our distributor can help find a package that suits your needs and budget. You'll find the contact details on our website [www.tover.care](http://www.tover.care).

The Tovertafel's Open Play & Learn subscription gives you access to the full range of games and features, which are regularly up- dated with new additions throughout the year. It also gives access to 'My Tover,' Tover's online portal, with resources, game guides, and instructional videos that will make it even easier to get the most out of the Tovertafel.

## Demo

Interested in seeing the Tovertafel in action? Contact our distributor for a free, non-binding demo and experience the Tovertafel for yourself.

## Crowdfunding

Tover wants as many caregivers as possible worldwide to be able to give people with dementia the gift of a better quality of life. That's why we've created a convenient crowdfunding toolkit, so caregivers can crowdfund their very own Tovertafel. For more information about crowdfunding, visit the pricing section on [www.tover.care](http://www.tover.care).

*"The device is not listed as clinical, but the benefit of it is very clinical, because we can see a definite improvement in a resident's demeanour, affect, or mood when they're playing it and after they've finished playing it. It's like a magic pill."*

Kim Salvio, Providence Point  
United States

”



## The effects of playing with the Tovertafel:



Prevents and reduces  
restless & tense  
behaviours



Increases physical  
activity



Breaks through  
apathy



Improves social  
interaction between  
residents



Increases staff work  
pleasure & lightens  
workload



Further improves  
relationships between  
carers & residents

*Happy Residents,  
Happy Staff,  
Happy Families.*

“Most promising  
innovation of 2022”

- CES and USA Today

