

**tover**<sup>®</sup>  
purposeful play



# The Tovertafel

Improving quality of life & quality  
of care for elderly people living  
with dementia

[tover.care](https://tover.care)





“

*“The residents are fascinated with the movement and the light and the Tovertafel seems to really calm people down who could otherwise get agitated”*

**Kate Cooper**, Activities Coordinator,  
Littlebourne House, UK

A photograph of two elderly women with white hair sitting at a wooden table. The woman on the left is wearing a grey sweater and has her eyes closed in a joyful expression. The woman on the right is wearing a red shirt under a grey patterned cardigan and glasses, laughing heartily with her mouth open. On the table in front of them is a colorful, geometric device called a Tovertafel, which consists of several brightly colored triangles (yellow, green, pink, purple) connected by thin rods, forming a mobile-like structure. The background is a plain, light-colored wall.

tover®



# The Power of Purposeful Play

The Tovertafel is an award-winning dementia care innovation that has become an indispensable tool in more than 10.000 care facilities worldwide. Developed in the Netherlands, the Tovertafel (Dutch for 'Magic Table') is the first serious games system of its kind. Care facility residents, staff, and relatives alike are able to experience its benefits first-hand.

## Playing for a better existence

The Tovertafel's unique games are scientifically proven to have a positive impact on the quality of life of elderly people living with dementia. Through interactive light projections, the games stimulate physical activity, social interaction and cognition. Resulting in real, measurable effects on the wellbeing of residents, as well as care staff.\*

## Everyday support and care


The Tovertafel can support care professionals in providing the highest quality of care on a daily basis. It can be integrated seamlessly into daily routines and broadens the range of easy yet effective activities that staff or volunteers can offer their residents. Challenging situations, such as

restlessness, or taking medication, are made more manageable by playing with the Tovertafel. By facilitating social interaction and reducing restless and tense behaviour, the Tovertafel helps strengthen carer-resident relationships and lightens workloads. Ultimately reducing employee turnover, increasing occupancy rates and raising the quality of care they provide. The Tovertafel makes person-centred care that much more achievable and enjoyable.

## Commitment to wellbeing

As well as providing invaluable moments of personal connection and joy, the Tovertafel improves a care facilities' offering. The cutting-edge technology demonstrates a facilities' dedication to resident wellbeing and its commitment to innovation. Proving to families that care facilities genuinely care about promoting happiness and engagement in caregiving.

*\*For more about Tover's commitment to research and the effects of the Tovertafel, please visit [www.tover.care/uk/claims](http://www.tover.care/uk/claims)*



*The Tovertafel brings more joy, is a meaningful distraction technique and makes for overall less agitation. Our staff finds the Tovertafel easy to use, helpful, engaging and they use it quite often throughout their shift."*

Stephanie Rodgers, Recreation Therapist,  
St. Teresa Place, Covenant Care,  
Canada

”



“

*“Every patient responded to the Tovertafel, whether they were actively participating or engaged as spectators. For many residents this is a giant leap forward. This is something we cannot achieve with the care we normally provide.”*

Ute Weiler, Geriatrics Nurse, University Medical Centre Mannheim, Germany



## This is How the Tovertafel Works

The Tovertafel can be mounted onto the ceiling above a table or flat surface using a simple click-and-ready system. This makes it easy to install the Tovertafel in familiar surroundings, which is especially important for elderly people living with dementia as it prevents overstimulation and unnecessary agitation. The Tovertafel projects vibrant, lifelike images onto the surface in the form of games that react to even the smallest of hand and arm movements. Creating a ‘magic-like’ effect that enchants residents and caregivers alike.

### More than 30 games to choose from

The Tovertafel and its games are developed in co-design together with care professionals, experts, relatives and the players themselves. Meaning they’re tailored exactly to suit their individual needs. The games also employ a no-fail, layered design which means that participants can play according to their ability. This instills confidence and makes the games easy to enjoy at any level. They come in a variety of formats, each promoting physical movement, social interaction and cognitive stimulation. Such as raking leaves, polishing silverware or playing a game of rummy.



Would you like to know more about the Tovertafel and its games? Visit:

[www.tover.care](http://www.tover.care)



# Tover's Offer

There are various options for purchasing a Tovertafel. The Tover team can help with finding one that ensures the purchase of a Tovertafel is as affordable as possible. The Tovertafel's Open Play & Learn subscription gives customers access to the full range of games and features, which are regularly updated with new additions throughout the year. It also gives them access to 'My Tover,' Tover's online portal, where they'll find resources, game guides, and instructional videos that will make it even easier to get the most out of their Tovertafel.

## Crowdfunding

Tover wants as many caregivers worldwide to be able to give people with dementia the gift of a better quality of life. That's why they've created a convenient crowdfunding starter pack, so caregivers can crowdfund their very own Tovertafel. For more information about crowdfunding, get in touch using the contact details below.

## Demo

Interested in seeing the Tovertafel in action? Contact Tover for a free, non-binding demo and experience the Tovertafel for yourself.

***"The device is not listed as clinical, but the benefit of it is very clinical, because we can see a definite improvement in a resident's demeanour, affect, or mood when they're playing it and after they've finished playing it. It's like a magic pill."***

Kim Salvio, Providence Point,  
United States

”







*“There’s nothing more valuable than creating moments of happiness in the care sector. That’s what motivates me.”*

Hester Le Riche, CEO and founder of Tover

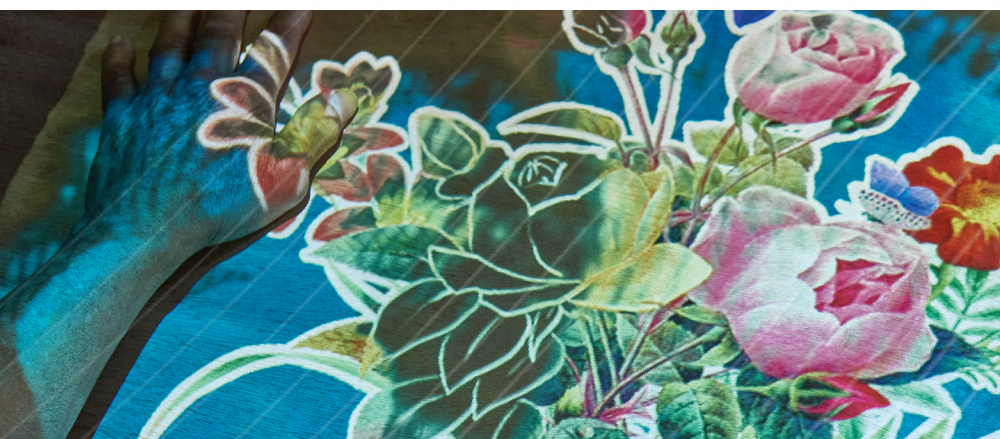
Hester Anderiesen Le Riche - PhD

## Tover Cares

Tover specialises in healthcare tools for dementia care. Founded in 2015 by Hester Le Riche, Tover is committed to creating a more caring and inclusive world for people with cognitive challenges. This started with the Tovertafel, which emerged as a result of Le Riche’s PhD research. It’s the only serious games system that is scientifically proven to improve quality of life, care and staff happiness. Today, the Tovertafel has become a household name in more than 16 countries worldwide.

### Proven effective

Tover is the only serious games provider with scientifically-proven effects. That’s why research plays a central role in the development and evaluation of products such as the Tovertafel. Tover works closely with end-users, healthcare professionals, family members, and other experts to develop its products in a process called co-design. They also value scientific research to ensure that what they create has beneficial effects, working closely with independent research partners to do so. That’s how they guarantee that their products cater to practices and solve current challenges in the care sector.



For more information about Tover’s research and to explore their studies, visit

[www.tover.care/research](http://www.tover.care/research)





[www.tover.care](http://www.tover.care)



## Discover the Tovertafel

Get to know the world's only serious games system for people living with dementia

*The Tovertafel is scientifically proven to:*



Reduce restless &  
tense behaviour



Increase physical  
activity



Break through  
apathy



Promote social  
interaction between  
carers & residents



Increase staff work  
pleasure



Further improve  
relationships between  
carers & residents

*Happy Residents.  
Happy Staff.  
Happy Families.*

***“Most promising  
innovation of 2022”***

- CES and USA Today

